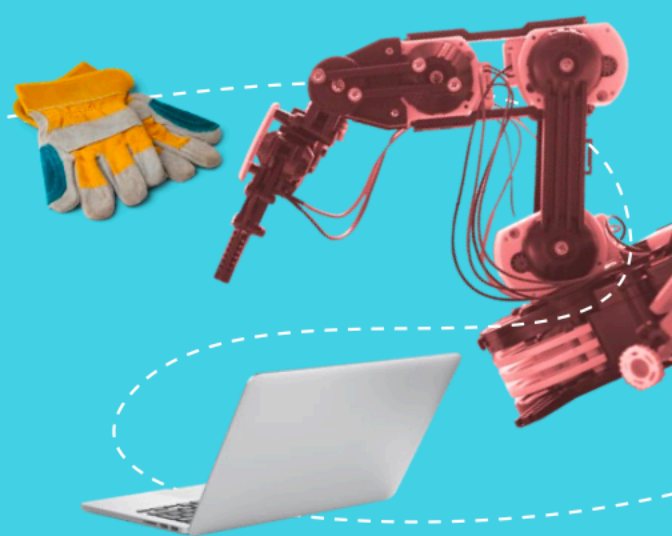


ASSAYER

We need Assayers because they provide key information that is critical for mine performance. Assayers are responsible for inspecting, grading, sampling and testing of raw and processed materials. They set their own priorities and activities and must have an eye for detail.



JOB DESCRIPTION

- Inspect, grade, sample, test or refine raw and processed materials, analyzing for substances such as metals, non-metallic materials, concentrates and waste
- Use spectrographic analysis, chemical solutions and specialized equipment
- Adjust methods of analysis and maintain analysis equipment
- Advise supervisor or colleagues of issues and communicate with engineers, metallurgists, hydrologists, skilled tradespeople and mill management
- Complete inspection and test reports
- May assist in environmental audits and the development of environmental protection procedures

JOB ENTRY REQUIREMENTS

Note: The requirements listed below illustrate what it takes to start the career and do not take into account on-the-job training given to new employees.

Fixed Requirements

- High school diploma or equivalent
- Must be able to pass a medical test
- Must be able to pass a drug test
- Willingness to work in a diverse environment
- Proficiency in language of operation

Regional Requirement

- Assayer Certification

May be Required

- Demonstrated prior proficiency in a scientific discipline
- Formal qualification or training in a scientific subject such as chemistry, geology, assaying

Assets

- Patience, analytical mind, ability to follow safety protocols, communication
- Work experience in a laboratory environment or in minerals processing
- Willingness to relocate
- Other languages

COMPENSATION

\$64,300 \$84,400 \$147,600

AVERAGE

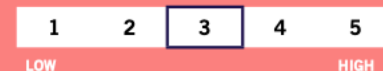
(Source: Canadian Mine Labour Service Report, Costmine, 2025).

JOB PROSPECTS

Demand in Mining



Skill Transferability Among Other Industries



WHY ARE PEOPLE ATTRACTED TO THIS CAREER?

Assayers make meaningful contributions to mine performance and are well compensated for their efforts. Working in a laboratory, an Assayer enjoys a clean and predictable environment with many opportunities to collaborate and interact with a variety of professionals.

WHAT IS IT LIKE TO WORK AS A ASSAYER IN MINING?

Note: conditions vary according to employer and region.

Assayers work in a laboratory near a mine or mill, spending the majority of their time standing while analyzing samples. They follow strict safety regulations due to the use of hazardous materials and may have to work under pressure to produce fast results in support of mine crews to maximize output. Handling supplies and substances involves light duty lifting.

SUCCESS PROFILE

- Works well with others, shares opinions and findings even when they are unfavourable
- Is analytical, stays focused, is patient, precise and accurate
- Accountable for decisions and actions
- Proficient in science
- Embraces new technology
- Fine motor skills
- Willing to engage in continuous learning and skills development